

# INGLEWOOD MIDDLE SCHOOL

SCHOOL TRANSITION KIT FOR PARENTS BY PARENTS



## Home of the Knights



# What Parents Need to Know...

---

1. Glossary of Terms and Acronyms
2. What are the differences between elementary and middle school?
3. What are the main communication lines between school and parents/guardians?
4. What systems are used to keep track of student work, assignments, grades and fees?
5. What to expect for academics and tests during the school year?
6. What sports, activities, and clubs are available to students?
7. Transportation, bus info and school maps
8. Important Reminders
9. School Schedules (Regular & Remote)
10. Getting to know your Inglewood Middle School Staff
11. Getting to know your Student Counseling services
12. Getting to know your Inglewood PTSA
13. Getting to know your Inglewood PTSA
14. ASB – PTSA – IMS...What is the difference?
15. How can I get involved and volunteer?



# Glossary of Terms and Acronyms



ASB	Associated Student Body (ASB) - made up of both elected and appointed positions who run the student government. Students in this group manage the student body finances, plan all events such as Knight Life, Fun Run, and work on building a positive school culture. ASB also refers to a student's school ID card.
ASB Card	All students are issued an ID card. An ASB Fee is required to participate in sports and other activities such as clubs. ASB funds go to support cultural, athletic, recreational and social activities. Also provides free access to home sporting events. Fee is generally \$25 at the middle school.
BTB	Back To Business – a term referencing the annual event that welcomes students and families back to school
Directory	An online resource for PTSA members that lists contact information for families.
ELL	English Language Learner – this refers to students who are learning English as a second language.
Eprep	This is a district wide initiative that ensures all schools are equipped with supplies to keep students safe during emergencies
InvestEd	A service that collects and often matches donations to the school
Pass the Hat	Annual fundraiser for the Inglewood PTSA – helps fund staff grants, scholarships, families in need, curriculum needs
LWSD	Lake Washington School District – the school district that IMS belongs to
PBIS	Positive Behavioral Interventions and Supports – a program to reward students for positive behavior
Silent Fundraising	Ways to donate to Inglewood PTSA through typical shopping – AmazonSmile, Everything Party, etc.
Matching	You employer may match your donations to fundraisers, this can double your gift!
PTSA	Parent Teacher Student Association
NJHS	National Junior Honor Society – an opportunity for students to achieve academic recognition
SBA	Smarter Balanced Assessment – the standardized tests used in Washington for 3rd – 8th graders
Skyward	An LWSD website where families can pay fees, check grades, and get the latest school and district information
STEM	Science Technology Engineering Math
Knightly News	The weekly Inglewood PTSA newsletter
WIAA	Washington Interscholastic Activities Association – the league in which our sports teams participate
SEL	Social Emotional Learning – the district, school and counseling department facilitate curriculum provided by the district to support student mental health and social skills development
504/IEP	Individual Education Plans – plans put in place for special education students or students with special needs to support them in the classroom.
LA/SS	Language Arts/Social Science Class

# What are some differences between elementary and middle school?



## Elementary School

**Curriculum:** Most subjects (except for specialists like music & PE) are taught by one teacher in the same classroom.

**Student responsibilities:** Students develop academic goals then the students, teachers, and parents work together to attain goals. Direct teacher/parent/student/counselor communication is encouraged.

**Student clubs/after school programs:** Most clubs and after school programs are run by PTSA volunteers and/or through vendors operating with a contract between vendor and PTSA .

**Parent involvement:** Multiple in-class parent volunteer opportunities and teacher communication are available.

**Teacher Communication:** Teachers typically send weekly classroom updates as well as meet each term for parent/teacher conferences. Additional parent/teacher/counselor meetings are available upon request.

## Middle School

**Curriculum:** Each subject is taught by a different teacher in a different classroom, students move from classroom to classroom.

**Student responsibilities:** Students develop academic goals and manage those goals on their own with guidance from teachers. Direct teacher/student/counselor communication is encouraged, students learn to advocate for themselves.

**Student clubs:** Most clubs are run by the ASB.

**Parent Involvement:** Limited in-classroom volunteers, occasional event volunteer opportunities offered by PTSA.

**Teacher Communication:** Students are expected to advocate for themselves by taking responsibility for teacher communication. There are no scheduled parent/teacher conferences. Teacher/counselor meetings can be scheduled upon request.

# What are the main communication lines between school and parents/guardians?



## School Communication

**Back to School Day:** Each August is an opportunity for school pictures, books/laptops pick-up, PE uniform orders.

**Curriculum Night:** At the beginning of the year in September, parents experience their student's daily schedule with teacher presentations.

**Principal Weekly Bulletin:** Principal Dan Irvine updates families each week with a detailed bulletin (usually on Fridays).

**Emails:** The school principal, teachers, counselors and staff are available via email for discussions or meetings.

**Counselor:** The counseling department updates families occasionally.

**School Website:** Be sure to bookmark the school website <https://ims.lwsd.org/>



## PTSA Communication

**PTSA Weekly Newsletter, *Knightly News*:** The PTSA is a major link between school and families. Be sure to become a PTSA Member & sign up for this weekly newsletter to get the most accurate, up-to-date information. [www.inglewoodptsa.org](http://www.inglewoodptsa.org)

**PTSA Meetings:** As members of the PTSA, you are invited to Membership Meetings four times during the year. These are a great way to hear directly from our principal, meet other parents, and learn more about the many events and opportunities at Inglewood. Find the PTSA Calendar here: <https://inglewoodptsa.membershiptoolkit.com/Calendar>

**PTSA Website/Social Media:** It is important to bookmark the PTSA website and follow the PTSA social media pages. Important PTSA and school information is always updated to these areas. <https://inglewoodptsa.membershiptoolkit.com/home>  
<https://www.facebook.com/inglewoodptsa>



## District Communication

**District Emails:** Watch your inbox for important weekly emails regarding district-wide updates and information.

**District Website:** It is important to bookmark the LWSd website for the most accurate and up-to-date district information. <https://www.lwsd.org/>

**District/School Notifications:** There are several notifications you can sign up for through the district, be sure to update your profile on Skyward so you get the notifications you need. These notifications may include school emergencies, missing assignments, or updates on assistance for those in need. <https://www.lwsd.org/students-families/for-students-and-families>



# What systems are used to keep track of student assignments, grades, and fees?



**Inglewood School Website:** The school website is the hub for school information. This site will help you find information on club, sports, and activities, course catalogs, daily schedules, curriculum updates, school calendar, and connect you to the IMS staff.

**Microsoft Teams:** New to LWSD during COVID-19 remote learning, this system is used district-wide for virtual classrooms, assignments, virtual events, and all student communication. Additional systems such as WellNet, OneNote, Amplify, Big Ideas Math, Turn It In, or FlexiSched may also be used for specific classes. Students receive training on these systems as needed. Directions for students using Teams can be found here: <https://ims.lwsd.org/studentsfamilies/directions-for-students-using-teams-classrooms>

**LWSD Website:** The district website is a wealth of information. This site can be used to not only access Skyward but to also track school buses, register for athletics, add funds to lunch programs, watch the district calendar, and pay any online fees or fines.

**Skyward Family Access:** This district system is used to track student grades, test scores, attendance, schedules, and academic history. Information and FAQ on Skyward can be found here: <https://www.lwsd.org/help/skyward-family-access> Skyward Student Access Support can be found here: <https://www.lwsd.org/help/skyward-student-access-support>

**School Fees:** Most fees can be paid through the LWSD website or directly at Inglewood in the front office. Most of these fees can be completed during the Back-to-School Day event. Some fees that can be expected in middle school may include:

- ASB Fee - Students who wish to participate in after-school sports, music, clubs, or activities are required to pay an ASB fee – typically \$25.
- Classroom Supplies – Some classes may require an additional fee to cover supplies.
- PE Clothes and Spirit Wear – PE uniforms are required when enrolled in a PE class. Spirit Wear, when available, is not required.
- Lunch Accounts – Student lunch accounts that can be replenished through the LWSD website
- Club or Team fees – There are often additional fees that need to be paid to participate in competitive clubs and sports; these fees vary per activity.
- Yearbook – Annual yearbooks can be ordered.
- Fines – Fines may accrue due to late library books, laptop repair, unreturned uniforms or equipment, etc.
- Fundraising – The ASB and the PTSA run fundraising programs to support students and staff at Inglewood.

**PTSA:** The Inglewood PTSA is an engaged organization that works directly with the school to foster communication between parents and the school. The PTSA provides staff grants, student scholarships, various student programs, and many family education and outreach programs. PTSA memberships and donations can be made during BTB Day and on the PTSA website throughout the year – no amount is too small.





# What to expect for academics and tests during the school year?

**Course Catalog:** The annual course catalog can be found on the school website (<https://ims.lwsd.org/academics>). This catalog will list all available classes offered for students as well as information on class paths for middle school. Students will work with their parents, teachers, and counselors to determine the best classes each year. Class choices are typically submitted in January, final schedules are available in September at the beginning of the school year.

**Final Schedules:** Final schedules are typically released no earlier than one week before classes begin. Please note that when class requests are submitted each year, these are not guaranteed. Class placement is dependent on several factors including previous grades, pre-requisite completion, space availability, etc.

**Schedule Changes:** Students can request schedule changes at the beginning of each semester.

**Core Classes:** This term refers to classes that are required for all students to complete each year in order to move on to the next grade level.

**Elective Classes:** This term refers to classes that students can choose based on their specific interests. There are elective requirements that students must take each year. Electives give students an opportunity to explore subjects.

**Class Curriculum:** A short description of each class can be found in the course catalog. A full syllabus for each class will be handed to each student at the beginning of the year. It is expected that this syllabus be read, discussed, and signed by both students and parents and then returned to teachers.

**Homework:** Homework is assigned daily but will vary by class. Teachers will typically follow the 10 minute per grade rule: • 6th grade (60 minutes for all subjects) • 7th grade (70 minutes for all subjects) • 8th grade (80 minutes for all subjects). Parents can sign up at the district level to be notified of missing homework assignments. Grades can be checked on the LWSO site as well as the MS Teams pages for each class.

**Tests and Exams:** Tests will be administered periodically and will vary by class. Midterm and final exams are important and will occur in most classes to ensure all students are reaching standards.

**Standardized Tests:** Various standardized tests will be used throughout the school year. Information on these tests will be clearly communicated through school communication channels.

**English Language Learning:** Classes are offered to empower new English-speaking students to both participate in classroom curriculum and attain English proficiency.

# What sports and activities are available to students?



## School Sponsored Activities

### Intramural Athletics:

Non-competitive sports played with teams formed within IMS. These sports can vary each year depending on student interest. They are 2 week in length, typically in Jan / Feb and the fee doesn't apply to the family cap. This is a great way to come out and be on the same team with friends or make new friends!

### Competitive Athletics:

Teams are formed through try-outs and travel to other schools for competitive games. Everyone will be placed on a team, we have 3 levels – Varsity, Jr Varsity and Regionals. The best part of Middle School Athletics is that every student who turns out gets to play on a team and compete against other schools. We have 4 – 8 week seasons, they include

Season 1 – Boys Basketball, Cross-Country, Boys Tennis

Season 2 - Boys Soccer, Girls Badminton

Season 3 – Co-Ed Wrestling, Girls Basketball

Season 4 – Girls Tennis, Co-Ed Track, Girls Volleyball.

This is a great way to connect to the school and play a sport. There is a fee associated with playing a sport, you will register through a program called Final Forms (available in late August) and will need to have a current physical to participate.

## ASB Sponsored Activities

ASB clubs are started and run completely by students with the help of the ASB teacher coordinator. Students are encouraged to develop and offer a variety of club opportunities to fellow students. These clubs are held after school. (During Remote Learning these clubs are held during school hours in flex-time.)

### Some ASB sponsored clubs may include:

Art For Others  
Among Us  
Creative Writing  
Debate Club  
GSA  
Journalism Club  
Math Olympiad  
Pokémon Club  
Random Acts of Kindness  
Star Wars Club  
Photography Club  
Film Club  
Animation Club  
Culinary Club  
Marvel Club  
Bullet Journaling Club  
Game Design Club  
Yearbook Club

## PTSA Sponsored Activities

PTSA sponsored activities & programs include both annual, recurring events as well as activities based on student and family interest.

### Some PTSA sponsored activities may include:

Reflections Art Contest

Essay Contest

Spelling Bee

Speaker Events

Parent Education Seminars & Events

Sustainability Programs

Drama Production

Homework Machine



# Transportation and school maps



## Traffic Flow During Drop-Off and Pick-Up

Parents must pick up and drop off students in the student drop off area.

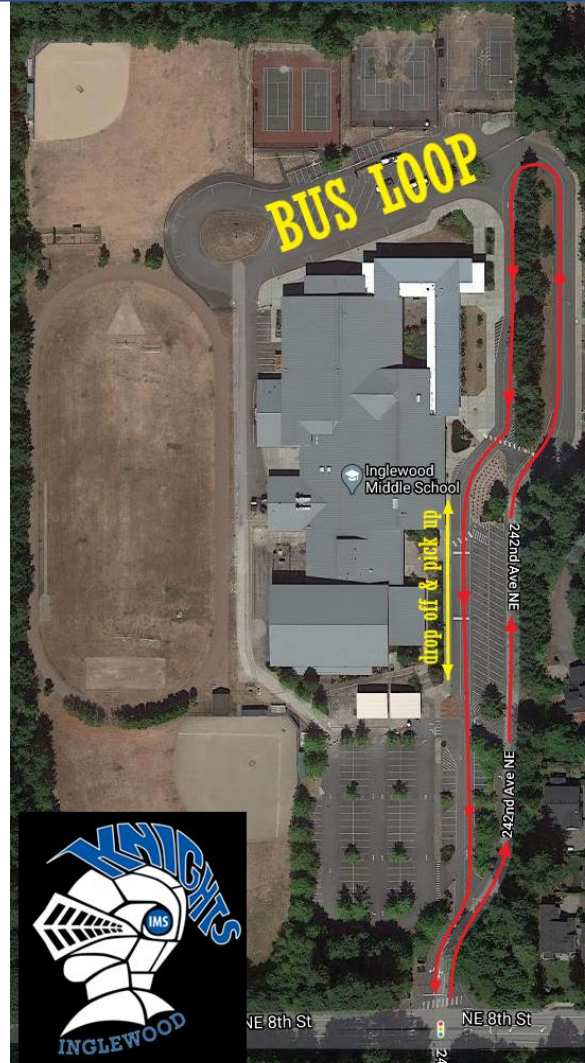
No parent vehicles are allowed in the bus drop off loop.

Please always pull completely forward and be courteous of other families. Please only use parking spaces if you are entering the building.

Avoid excessive idling for the health of our students and staff. If you are waiting for your student, please turn off your engine.

Strict adherence to traffic rules is imperative during drop-off and pick-up times so as not to cause major traffic jams. Being constantly aware and driving slowly is important as Inglewood has many walkers and bikers during peak times.

Find a video showing the drop off and pick up route here:  
<https://www.youtube.com/watch?v=h-OgrJmUetQ>



## In-School Visitors

Persons who are not IMS students or district staff are not allowed on campus during school hours without permission. Visitors to Inglewood Middle School are required to report to the main office to sign-in and out and obtain a name badge.

- Students not attending IMS are not permitted as guests during the school day.
- Regular volunteers at Inglewood must complete an LWSD volunteer application. LWSD Volunteer Approval Process: <https://www.lwsd.org/get-involved/volunteering-in-lwsd/volunteer-application-process>
- Parents wishing to visit their student's classroom or teachers should make arrangements in advance.
- Previous IMS students are welcome to visit teachers by appointment and after school.

Find a virtual tour of Inglewood here:  
<https://youtu.be/kQe0-dDgIEk>

# Important reminders



**Cell Phone Use:** Student cell phones must be turned **"OFF"** and put away in backpacks during school hours 7:50 to 2:20. Text messaging and internet browsing during school hours is also prohibited.

**Dress Code:** School clothing shall be neat, clean, not a distraction to the learning environment and be appropriate for classroom learning and the school environment.

- Underwear must be covered at all times.
- Shorts or skirts should not be revealing, a minimum of a 3" inseam.
- Rips or holes in jeans or pants must not be above mid-thigh.
- The bottom of the shirt or blouse must meet or cover the top of the pants or skirt. No midriff can be showing front or back.
- Shirts and shoes must be worn at all times.
- No emblems with alcohol or tobacco advertising.
- No pictures, words, or symbols which contain racist, sexually related, drug, or gang themes or other offensive language.
- During science labs, students must have clothing which covers legs, feet and shoulders.
- Deep cut arm hole shirts showing excessive skin (such as some jerseys) are not allowed.

**Attendance: *REGULAR ATTENDANCE IS A HIGH PRIORITY AT INGLEWOOD MIDDLE SCHOOL:*** Vacations or other non-illness should be avoided during the school days as vacation days are provided within the regular school calendar. The school will determine whether absences or tardies are excused. Excused absences (based on Washington State Compulsory School Attendance and Admission Law, RCW 28A.225, also called the "Becca Bill" and LWSD Policy) include the following: illness, medical appointments, family emergency, religious holiday, school-related field trips, suspensions, or other pre-arranged absence. If sufficient reason for an absence is not provided, the absence will be considered unexcused.

Because regular attendance is both an expectation and a critical component of school success, parents or guardians of students who exceed four (4) unexcused absences in a semester will be sent a letter of concern. Parents/guardians of students who exceed ten (10) unexcused absences in a semester will be required to meet with the Assistant Principal/Principal, and contact will be made with the LWSD Becca Coordinator for referral. Unexcused tardiness to school will result in the assignment of detention or school service.

**ANTI-BULLYING RULES:** The Anti-Bullying Rules are taught and reviewed on an annual basis.

1. We will not bully others or engage in bully type behavior.
2. We will be kind to others.
3. We will try to help other students who are bullied.
4. We will try to include students who are left out.
5. If we know that someone is being bullied, we will tell an adult at school and an adult at home.

Please refer to the current **INGLEWOOD STUDENT HANDBOOK** for further details:

<https://ims.lwsd.org/studentsfamilies/student-handbook>

# School Schedules 2021-2022 Schedule \*\*currently being

revised for 2022-2023 School Year



## Inglewood Middle School Regular Daily Schedule

Monday		
p1	7:50	8:50
p2	8:54	9:44
p3	9:48	10:38
p4L	10:42	12:08
UKnighted	12:12	12:32
p5	12:36	1:26
p6	1:30	2:20
A lunch	10:38	11:08
B lunch	11:08	11:38
C lunch	11:38	12:08

Tuesday		
Flex check	7:50	7:54
p1	7:54	8:41
p2	8:45	9:32
Flex	9:36	10:16
p3	10:20	11:07
p4L	11:11	12:37
p5	12:41	1:28
p6	1:32	2:20
A lunch	11:07	11:37
B lunch	11:37	12:07
C lunch	12:07	12:37

Wednesday		
p1	7:50	9:20
p3	9:24	10:50
p5L	10:54	12:50
A lunch	10:50	11:20
B lunch	11:35	12:05
C lunch	12:20	12:50

Thursday		
Flex Check	7:50	7:54
p2	7:54	9:25
Flex	9:29	10:09
UKnighted	10:13	10:47
p4L	10:47	12:44
p6	12:48	2:20
A lunch	10:47	11:17
B lunch	11:30	12:00
C lunch	12:14	12:44

Friday		
p1	7:50	8:50
p2	8:54	9:50
p3	9:54	10:50
p4L	10:54	12:20
p5	12:24	1:20
p6	1:24	2:20
A lunch	10:50	11:20
B lunch	11:20	11:50
C lunch	11:50	12:20

## Inglewood Middle School Remote Learning Schedule 2020-2021

Monday	Tuesday	Wednesday	Thursday	Friday
Period 1 9:00 – 10:00	Period 2 9:00 – 10:00	Asynchronous Learning & Support (Periods 1-6) 9:00-12:00	Period 1 9:00 – 10:00	Period 2 9:00 – 10:00
Uknighited 10:10-10:40	FLEX 10:10-10:40		FLEX 10:10-10:40	Uknighited 10:10-10:40
Student Work Time 10:40-11:10	Student Work Time 10:40-11:10		Student Work Time 10:40-11:10	Student Work Time 10:40-11:10
Lunch 11:15 – 11:45	Lunch 11:15 – 11:45	Lunch 12:00 – 12:30	Lunch 11:15 – 11:45	Lunch 11:15 – 11:45
Period 3 11:50-12:50	Period 4 11:50-12:50	Student Work Time 12:30-4:00	Period 3 11:50-12:50	Period 4 11:50-12:50
Period 5 1:00-2:00	Period 6 1:00-2:00		Period 5 1:00-2:00	Period 6 1:00-2:00
Period 0 2:10 – 3:10			Period 0 2:10 – 3:10	
Asynchronous Learning & Support (Periods 0, 1, 3, 5) 2:00-4:00	Asynchronous Learning & Support (Periods 2, 4, 6) 2:00-4:00		Asynchronous Learning & Support (Periods 0, 1, 3, 5) 2:00-4:00	Asynchronous Learning & Support (Periods 2, 4, 6) 2:00-4:00

# Getting to know your Inglewood Middle School Staff



## Inglewood Middle School

24120 NE 8th ST, Sammamish, WA 98074

Tel (425) 936-2360 - Fax (425) 868-0628 - **Attendance (425) 936-2361**

Website: <https://ims.lwsd.org/>

Inglewood Calendar: <https://ims.lwsd.org/about-us/calendar>

Lake Washington School District Calendar: <https://tinyurl.com/yyduybt3>

Find the complete Staff Directory here:

<https://ims.lwsd.org/about-us/staff-directory>

- Attendance Phone Number: (425) 936-2361
- Attendance Email: [InglewoodAttendance@lwsd.org](mailto:InglewoodAttendance@lwsd.org)
- Principal: Dan Irvine - [dirvine@lwsd.org](mailto:dirvine@lwsd.org)
- Associate Principal: Sara Hall - [shall@lwsd.org](mailto:shall@lwsd.org)
- Associate Principal: Devin Engledew - [dengledew@lwsd.org](mailto:dengledew@lwsd.org)
- Office Manager: Becky Whelchel - [rwhelchel@lwsd.org](mailto:rwhelchel@lwsd.org)
- Attendance Secretary: Kelley Sikes – [ksikes@lwsd.org](mailto:ksikes@lwsd.org)
- AP Secretary/ASB/Athletics: Sue Bangasser - [sbangasser@lwsd.org](mailto:sbangasser@lwsd.org)
- AP Secretary/ASB/Athletics: Sue Bangasser - [sbangasser@lwsd.org](mailto:sbangasser@lwsd.org)
- Registrar/Counseling Sec: Erica Maule - [ermaule@lwsd.org](mailto:ermaule@lwsd.org)
- Counselor 7th Grade D-Z: Karyn Summers - [kasummers@lwsd.org](mailto:kasummers@lwsd.org)
- Counselor 8th Grade C-Z: Tiffany Jones - [tifjones@lwsd.org](mailto:tifjones@lwsd.org)
- Counselor 6th Grade D-Z: Scott Paul - [spaul@lwsd.org](mailto:spaul@lwsd.org)
- Counselor 6 A-B 7 A-C 8 A-C: Dylan Slatton - [dslatton@lwsd.org](mailto:dslatton@lwsd.org)
- Leadership Teacher/ASB Advisor/Activities Coordinator: Sarah Hubert - [shubert@lwsd.org](mailto:shubert@lwsd.org)
-



# Getting to know your Student Counseling services



The Counseling Office offers a whole host of services and your student will want to know who her/his counselor is (determined alphabetically – please visit the [website](#) to determine which Counselor has been assigned to your student). Your school counselor will remain the same in 6th, 7th and 8th grade.

## **Encourage your student to meet with their counselor.**

Among the services they provide are:

- Course registration and scheduling
- Managing elective choices
- Monitoring of student academic credits
- Academic, personal/social and career advising
- Coordination of referrals for community resources
- Guidance for choosing high school path

**School Counselor Role:** Their role is to support student academic performance by providing social/emotional, academic, and career related interventions. The Counselors also provide classroom lessons to students on a wide range of topics including stress management, mindfulness and careers.

When should I consider contacting the school counselor?

- If your student is experiencing any social/emotional distress
- If your student is having an academic concern that isn't resolved after working directly with the classroom teacher contact us.
- If there is a significant change in your student's behavior If you're unsure, please call or email.

Counseling Office Contacts and more information can be found here: <https://ims.lwsd.org/studentsfamilies/counseling>

**At Inglewood there are 4 Counselors - please visit the [website](#) to determine which Counselor has been assigned to your student:**

Karyn Summers - [kasummers@lwsd.org](mailto:kasummers@lwsd.org)

Tiffany Jones - [tifjones@lwsd.org](mailto:tifjones@lwsd.org)

Scott Paul - [spaul@lwsd.org](mailto:spaul@lwsd.org)

Dylan Slatton - [dslatton@lwsd.org](mailto:dslatton@lwsd.org)



# Getting to know your Inglewood PTSA



These are some of the many volunteers who support PTSA, our staff and students at Inglewood

<https://inglewoodptsa.membershiptoolkit.com/home>

## 2020-2021 Executive Committee

President - [Katja Wright](#)

Secretary - [Candice Wheeler](#)

Treasurer - [Andrew Brill](#)

Vice-President(s) of Fundraising - [Rebecca Lavier & Funda Ozkeskin](#)

## 2020-2021 Board of Directors

Membership Chair - [Jen Fowler](#)

Volunteer Coordinator(s) - [Priyanka Sangam & Kiran Badam](#)

Legislative Advocate - [Sheila Sappington](#)

Communications Co-Chair(s) - [Sarah O'Brien & Sudha Balaji](#)

ASB Liaison - [Molly Hylen](#)

## 2020-2021 Committees & Chairs

Nominating Committee - Lena Hamilton, Candice Wheeler, Heather Chapman,

Financial Review Committee - Charlotte Olsen, Andrea Estrada, Kerri Miller

Pantry Packs Chair - [Maria Villar](#)

Knight Life Chairs - [Lara Osborn](#), [Amanda Dinklocker](#), [Janna Stanley](#), [Miriam Lamaute](#)

Knight Life Concessions Chair - **OPEN**

School Pictures Chair - [Jen Mosca](#)

Reflections Art Chair - [Prathiba Ganesan](#)

Back to Business Days Chair - **OPEN 2021**

Drama Production Chair - [Alyse Settle & Ann Paras](#)

Health Screening Chair - [Nicole Crandall](#)

Emergency Prep Chair - [Kurt Dillard](#)

Family and Community Engagement (FACE) Chair - [Nishtha Babith](#)

Spelling Bee Chair - [Leta Hamilton & Elena Luican](#)

Special Education Co-Chairs - [Sudha Balaji & Ashley Thompson](#)

Awards & Scholarships Chair - **OPEN**

Staff Appreciation Chair - [Paula Cisneros](#)

Tri-Awareness Chair - **OPEN**

Sustainability Chair - [Maria Villar](#)





# Getting to know your Inglewood PTSA



## What is PTSA?

The PTSA (Parent-Teacher-Student Association) is a private, non-profit organization of parents, teachers, students, and community members who strive to better the lives of children.

We are part of an association that is organized at the local, state, and national levels. By joining PTSA, you are automatically a member of the state and national associations.

The PTSA is the largest child advocacy volunteer organization which speaks for the interest of all children and their safety, health, welfare, and education.

## Why Join PTSA?

When you join the Inglewood Middle School PTSA, you join a community that encourages student achievement and enriches the learning environment. We believe in building partnerships between our families and our schools. Together we can make a difference!



## How Does PTSA Support Our School?

Your Inglewood Middle School PTSA takes a multifaceted approach to supporting all children in our school. We reinforce and strengthen classroom studies by providing teachers with money for programs and classroom materials. We coordinate volunteers for events and other school needs.

We sponsor a variety of programs and projects including, but not limited to:

- August Back 2 Business Days
- Emergency Preparedness
- Parent Education
- Reflections Art Competition
- Student Directory
- Teacher/Staff Appreciation
- Drama Production
- Grants to the school for programs & materials that enhance the existing curriculum and academic activities

**To Finance these Activities only ONE, simple Fundraiser is Promoted**

- Pass-the-Hat Fundraiser



## What Does Your PTSA Membership Cost?

\$25 for 2 adults OR \$15 for 1 adult OR \$11 for staff members. Membership is effective for one school year.

Please complete a membership form and submit with your payment (check or cash) to the Inglewood Middle School PTSA or join online at [www.inglewoodptsa.org](http://www.inglewoodptsa.org)

## What Do I Get with My Membership?



Your membership ensures your meaningful involvement and vote in PTSA-related activities. We encourage your attendance at four general meetings per year. Meeting dates will be announced in our newsletter & on Facebook.

As a member, you further our child advocacy mission by helping to identify needs and concerns. Your PTSA provides a venue for you to contribute to your student's success.

You also have access to the WA State PTA and National PTA websites [www.wastatepta.org](http://www.wastatepta.org) and [www.pta.org](http://www.pta.org). These sites contain parenting education, advocacy information and on-line learning tools.

**JOIN PTSA TODAY:**  
<https://inglewoodptsa.membershiptoolkit.com/home>

**VOLUNTEER  
FOR  
YOUR  
CHILD**



**UNITE  
FOR  
YOUR  
CHILD**



**PTA  
FOR  
YOUR  
CHILD**



**CONNECT  
FOR  
YOUR  
CHILD**



**JOIN  
FOR  
YOUR  
CHILD**



**CHAMPION  
FOR  
YOUR  
CHILD**



**INVEST  
FOR  
YOUR  
CHILD**



**ENGAGE  
FOR  
YOUR  
CHILD**



# ASB – PTSA – IMS

## What is the difference??



### Student Government / Associated Student Body (ASB)

- A Student Government that represents the entire student body. This Student Government's official name is the "Associated Student Body", or ASB.
- ASB funds are public money, generated by the students or in the name of the students, and may be used only for cultural, athletic, social or recreational purposes which are optional and non-credit.
- Run by ASB student officers, in close coordination with the school.
- **Activities and programs include:**
  - School-wide cultural events and speakers
  - Dances and Social Events
  - Honor Society
  - Student Clubs
  - Athletics and Intermural sports
  - Yearbook
- **Money is raised by:**
  - Membership fees
  - School Store
  - T-Shirt and Sweatshirt Sales
  - Tickets sold for events and dances

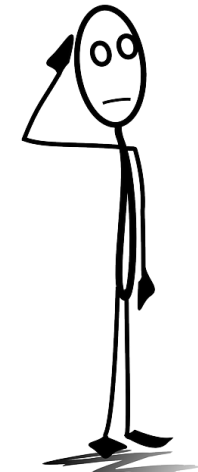
### Inglewood Middle School Parent Teacher Student Association

- A national organization that enables parents to represent, help and communicate more closely with their school, and the school system as a whole.
- A non-profit corporation run by parent volunteers. PTSA is the largest child advocacy organization in the country, advocating for ALL children with legislature, striving to better their lives.
- **Activities and programs include:**
  - August Back 2 Business Days
  - Emergency Preparedness
  - Parent Education
  - Reflections Art Competition
  - Student Directory
  - Teacher/Staff Appreciation
  - Drama Production
  - Grants to the school for programs & materials that enhance the existing curriculum and academic activities
- **Money is raised by:**
  - Membership fees
  - Pass-the-Hat Fundraiser
  - Company matching of employee donations
  - Amazon Smile



### Inglewood Middle School (IMS)

- Our local Middle School, run by the Lake Washington School District, which is governed by an elected school board.
- Parent Volunteers who serve at school activities must pass a background check by the Lake Washington School District.
- **Money is collected for:**
  - PE Uniforms
  - School Lunches
  - Sports Fees
  - Library Fines
  - Class specific supply fees
  - Star Reading Program



**VOLUNTEER  
FOR  
YOUR  
CHILD**



**UNITE  
FOR  
YOUR  
CHILD**



**PTA  
FOR  
YOUR  
CHILD**



**CONNECT  
FOR  
YOUR  
CHILD**



**JOIN  
FOR  
YOUR  
CHILD**



**CHAMPION  
FOR  
YOUR  
CHILD**



**INVEST  
FOR  
YOUR  
CHILD**



**ENGAGE  
FOR  
YOUR  
CHILD**



# How can I get involved and volunteer?



## Volunteering at School

While the volunteering opportunities at the middle school level are less available for parents, there are still many ways to get involved! Reach out to your teachers or Inglewood staff to see how you can help and become a PTSA Member - these are the best ways for parents to be involved and advocate for their students.

Some possible volunteer opportunities at the school may include:

- Classroom assistance
- Library Help
- ASB Events
- Pantry Packs
- School Pictures
- Competitive Club Coaches
- Activity Chaperones
- Campus Clean-Up



All volunteers (virtual or in-person) must be approved by the Lake Washington School District. LWSD Volunteer Approval Process: <https://www.lwsd.org/get-involved/volunteering-in-lwsd/volunteer-application-process>

## Volunteering with the PTSA



- Without our amazing volunteers, many valuable programs and activities would not exist. Your time is valuable, and we are grateful for every volunteer minute. We have many different volunteer positions - there is something for everyone. Some positions require a year-long commitment, some require just a few hours.
- All volunteers (virtual or in-person) must be approved by the Lake Washington School District. Before you start volunteering at Inglewood, you must go through a screening process for the safety of students and volunteers alike. Follow this link to begin the application process. You will need a scanned copy of your driver's license. The application takes about 10 minutes to complete, and you will receive a confirmation email regarding your approval status within 2 weeks. Once approved, your status as an approved volunteer will last for two years.
- LWSD Volunteer Approval Process: <https://www.lwsd.org/get-involved/volunteering-in-lwsd/volunteer-application-process>
- We want to work together and there is always room for volunteers! Please click the link below to learn more about getting involved and advocating for your child!  
Check out opportunities here:  
<https://inglewoodptsa.membershiptoolkit.com/volunteer>



# Thank you to our partners for making this resource possible!

Thank  
you



Many thanks also to  
Timberline PTSA who  
shared their Toolkit  
with us!